

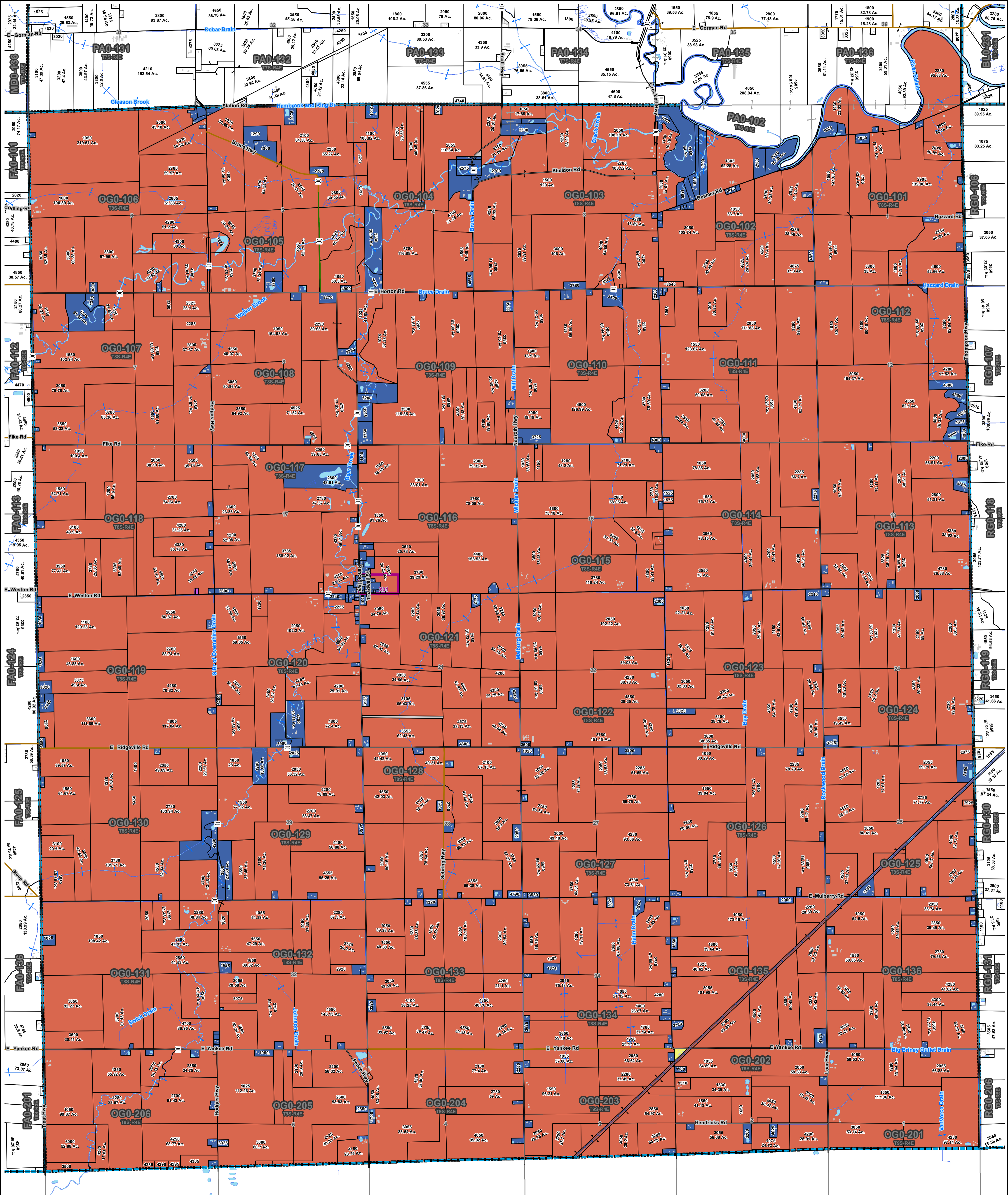
Lenawee County G.I.S
 301 N. MAIN ST
 OLD COURTHOUSE 1ST FLOOR
 ADRIAN, MI 49221

Ogdon Township
 4015 Residential Land Sales

PHONE: (517)264-4522
 FAX: (517)264-4529

Legend
 L-4015

1 inch = 1,500 feet
 NOTE: THIS MAP IS INTENDED FOR ILLUSTRATION/REFERENCE ONLY. LENAWEE COUNTY DOES NOT WARRANT THE ACCURACY OF THIS MAP AND IT IS NOT INTENDED AS A REPLACEMENT FOR A SURVEY.



Lenawee County G.I.S
 301 N. MAIN ST
 OLD COURTHOUSE 1ST FLOOR
 ADRIAN, MI. 49221

Ogdenville Township Land Table

Legend

Land Table	40100, OGDEN AGRICULTURAL	02010, OGDEN COMMERCIAL
<all other values>	40400, OGDEN RESIDENTIAL	03010, OGDEN INDUSTRIAL

1 inch = 1,500 feet
 NOTE: THIS MAP IS INTENDED FOR ILLUSTRATION/REFERENCE ONLY. LENAWEE COUNTY DOES NOT WARRANT THE ACCURACY OF THIS MAP AND IT IS NOT INTENDED AS A REPLACEMENT FOR A SURVEY.

